



Prevalence of Candida Species in Patients with Fixed Orthodontic Appliance

Heba Faiz Hamodat ¹, Suhad Muwafaq Hamdoon ¹, and Raafat Jasim Al-Adool²

¹Department of Basic Dental Sciences, College of Dentistry, University of Mosul, Mosul, Iraq

²Department of maxillofacial surgery, College of Dentistry, University of Mosul, Mosul, Iraq

Correspondence: Heba Faiz Hamodat

Email: hebahamodat@uomosul.edu.iq

Received: 30 September 2024; Accepted: 18 May 2025; Published: 30 June 2025

Abstract

Aim of the study: Patients with tooth misalignment are typically treated with traditional brackets during orthodontic treatment. The complexity of bracket design often hinders proper oral hygiene, resulting in an increased load of microbiota. The shape of the brackets acts as a reservoir for *Candida*, leading to candidosis of the oral cavity. This investigation aims to evaluate the impact of fixed orthodontic appliances on the count and distribution of salivary *Candida* species compared to saliva from subjects without orthodontic appliances.

Material and method: Eighty participants from the Iraqi population wearing fixed orthodontic devices comprised the study group, while 20 participants without orthodontic devices served as the control group. Salivary samples were obtained from both groups, and *Candida* chromogenic agar was used for cultivation. The counting and identification of different *Candida* species were confirmed using the Vitek 2 system to validate cultural characteristics.

Results: In this study, four types of *Candida* species were identified: *C. parapsilosis*, *C. albicans*, *C. tropicalis* & *C. krusei* in comparison to various published researchs, this study showed no statistically significant increase in colonization by any *Candida* species during the orthodontic treatment. However, *C. tropicalis* was the most frequently isolated species for both test and control groups in comparison with other species. The fixed appliances had no impact on the existence, non-attendance or scale of habitation by *Candida* species and there were no considerable variation in the prevalence of *Candida* species, based on different factors (age, gender, and saliva pH) for both test and control groups.

Conclusion: The results of this study indicate that fixed orthodontic treatment had no effect on the prevalence of *Candida* species. This suggests that *Candida* accumulation may be related to an individual's own oral flora and is influenced by oral hygiene practices throughout their life.

Keywords: *Candida albicans*, *C. tropicalis*, *C. glabrata*, *C. parapsilosis*, *C. krusei*, fix orthodontic appliance.

Introduction

The third most common problem in oral health is malocclusion, which is responsible for many oral complications (Castellanos-Cosano et al., 2013). Therefore, the aim of comprehensive orthodontic management is to improve patients' aesthetics, occlusion, mastication, self-respect and overall health (Baricevic et al., 2011). Classical brackets are commonly used in the treatment of patients

with malocclusions. Oral hygiene can be affected by complex construction of brackets, which considers as predisposing factors to raised load of yeasts and bacteria (Lucchese et al., 2018; Klaus et al., 2016). In classical orthodontic brackets, one of the elements which are used to connect orthodontic wires with brackets is elastomeric rings. These rings are favorable conducive to biofilm formation and colonization of microorganisms due to their roughness and



irregularity (Magno et al., 2008). The accumulation of various microorganisms leads to the formation of biofilms. It is style of life for many microorganisms to survive in hostile circumference, so it became as a reservoir of pathogens, biofilm consider as one of virulence elements of *Candida* and it would appear that isolated strains from orthodontic appliance will form a well biofilm (Sampaio et al., 2019).

In human oral cavity the common micro flora which colonizes up to 60% in young adults are *Candida* species (Khanpayeh, Jafari and Tabatabaei, 2014), it may cause oral mycosis. *Candida albicans*, *C. tropicalis*, *C. glabrata*, *C. parapsilosis*, *C. krusei* are the most causative agents of oral candidosis especially in immune compromised patients such as diabetic, the presence of oral gram + ve bacteria, increase the ability of *Candida* species to form biofilm (Van Wyk and Steenkamp, 2011).

The objective of this project is to evaluate the effect of fixed orthodontic appliance on the prevalence of salivary *Candida* species and compare with saliva of control group.

Materials and Methods:

The research was conducted in accordance with the guidelines of the Declaration of Helsinki, and was approved by the Ethics Committee of College of Dentistry, University of Mosul, Iraq (UoM. Dent/H.L. 18/22). Samples were collected from both Al-Noor and Al-Dhabat centers after obtaining approval from the Nineveh Health Department.

Eighty subjects (40 female and 40 male) age between 11 and 40 years, with a mean age of 19.6 years, wore fixed upper and lower orthodontic appliances for varying treatment intervals. They were compared to control group of 20 subjects. A single examiner assessed all patients, recording their name, gender, age, and responses to a questionnaire that focused on their oral hygiene habits, including the frequency of tooth brushing, use of interdental floss and mouthwash usage. Subjects in this study did not record any systemic disease, did not taking any antimicrobial drugs at the past three months, weren't smokers, there were no history for trauma, weren't wearing orthodontic appliance previously and facultative take part in the research. Subjects were ordered to not drink or eat at least two hours before collection of saliva. An stimulated saliva about 3ml was collected in sterile plastic tube with lids, then thermal receptacle with ice was used to transported saliva and processed within two hours after gathering, and the pH for each saliva was measured by chemical indicator paper strip (Ruttapharm madaus group). (Chan-Woo, Hye-Kyoung and Mee-Eun, 2015)

After shaking of saliva sample with shaker, Swab was used for streaking 100 µl saliva sample on HiChrome™ *Candida* agar plates which prepared according to instructions of manufacture (Himedia) then incubated at 37C' for 24-48 hours. After cultivation the number of *Candida* colonies on each plate were manually counted. Different *Candida* species were identified by colony culture characteristics particularly the color, and

confirmed by using the VITEK 2 system automated card system (Muhsen et al., 2020).

Statistical Analysis

The outcomes of the investigation were subjected to statistical analysis using SPSS version 26. To test the impact of orthodontic treatment on the prevalence of *Candida* spp as well as the effect of three parameters (age, gender, and saliva pH) in orthodontic patients on the prevalence of *Candida* spp, compared with control individuals. Nonparametric Pearson’s χ^2 test was utilized. Results with a significance level of p were less than 0.05 ($p < 0.05$) were considered statistically significant.

Results

The total number of samples in this study was 100, consisting of 80 in the test group and 20 in the control group. The test group was distributed by age, with 40 test and 10 control participants aged 20 or younger, and 40 test and 10 control participants over 20. By gender, there were 40 test and 11 control males, and 40 test and 9 control females. Regarding pH levels, there were 39 test and 11 control participants with a pH of 7 or less, and 41 test and 9 control participants with a pH greater than 7, as shown in the table (1).

Table 1: Samples distribution

Factor		Test	Control	Total
Age	≤20	40	10	50
	>20	40	10	50
Gender	male	40	11	51
	female	40	9	49
PH	≤7	39	11	50
	>7	41	9	50

100 µl of each saliva sample was aseptically cultured on *Candida* chromogenic agar plates which appeared in various color and colony characteristics. There was no statistical variation in the predominance of all types of *Candida* spp. Between the test group (patients wearing fixed orthodontic appliance) and control groups for both age groups (≤20 ,

>20) $p=(0.23, 0.09)$ respectively, gender male and female groups $p=(0.79,0.1)$ respectively, pH groups (≤7 &>7) $p=(0.35, 0.06)$ respectively. Table (2) showed the prevalence of the total number of *Candida* spp. For test and control groups.

For the cultivation and identification of *Candida* spp, swabs were taken from the oral cavity, allowing for an objective evaluation of the existence or exclusion of fungal habitation in the study groups of patients. In our study, four different *Candida* spp. Observed on chromogenic agar, the initial

identification based on colony characteristics particularly the colors. The ultimate identification were carried out by Vitek 2 system: *C. tropicalis*, *C.parapsilosis* : white, *C.albicans*: turquoise: blue & *C.krusei*: pale violet (Fig 1 a and b).

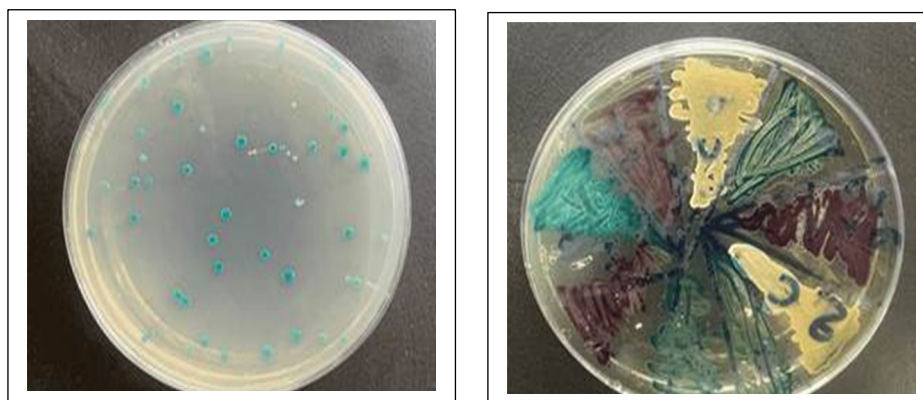


Figure 1: a *C. albicans* turquoise colony color, b different candida species isolates

The total number of all *Candida* species were counted for both test (orthodontic) and control individuals Table (2).

Table 2: The prevalence of candida spp in test and control groups

Factor		Test			Control			Sig.
		Absent	≤20	>20	absent	≤20	>20	
Age	≤20	17	18	5	7	3	0	0.23
	>20	17	12	11	1	6	2	0.09
Gender	Male	14	16	10	5	4	2	0.79
	female	20	10	10	4	5	0	0.1
PH	≤7	21	17	11	5	4	2	0.35
	>7	21	9	11	4	5	0	0.06

In contrast to other published studies, no statistically significant increase in *Candida* species colonization was observed after orthodontic treatment. The study, revealed the frequent presence of *Candida* spp. In each test group across the three parameters. In the age group ≤ 20 25 samples, representing 50% were free of all *Candida* species, while *C. tropicalis* appeared in 15 samples, representing 30%, *C. albicans*, *C. parapsilosis* & *C. krusie* were (1, 2, 1)

representing (2%, 4%, 2%) respectively, for age group >20 *Candida* spp. Absent in 18 samples, representing 36.8% while again *C. tropicalis* were the most frequently appeared in 22 samples, representing 44.9%, other *Candida* spp. Were *C. parapsilosis* 3 (6.1%), *C. krusie* 1 (2%), *C. albicans* & *C. tropicalis* appeared together in 1 sample (2%), *C. parapsilosis* & *C. krusie* 1(2%), *C. krusie* and *tropicalis* 3 (6.1%) Table (3).

Table 3: frequency of *C. spp.* For orthodontic individuals according to age groups

≤ 20			>20		
Spp.	Freq.	%	Spp.	Freq.	%
Non	25	50	Non	18	36.7
<i>C. albicans</i>	1	2	<i>C. parapsilosis</i>	3	6.1
<i>C. parapsilosis</i>	2	4	<i>C. krusi</i>	1	2
<i>C. Krusi</i>	1	2	<i>C. tropicalis</i>	22	44.9
<i>C. Tropicalis</i>	15	30	<i>C. albicans</i> & <i>C. tropicalis</i>	1	2
			<i>C. Parapsilosis</i> & <i>C. krusi</i>	1	2

Spp.: species, Ferq: frequency, %:percentage

For the salivary pH group ≤ 7 : 17 samples representing 34% were free of *Candida* spp. while *C. tropicalis* appeared in 19 samples representing 38%, *C. albicans*, *C. parapsilosis*, *C. krusie*, *Parpsilosis* & *krusi* together, *Parpsilosis* & *tropicalis* together, *krusie* and *tropicalis* together were (1, 4, 1, 1, 1, 3) representing (2%, 8%, 2%, 2%, 2%, 6%)

respectively ,for pH group >7 *Candida* spp. Included absent in 25 sample representing 50 % while again *C. tropicalis* were the most frequently appeared in 19 samples representing 38 %, other *Candida* spp. *C. parapsilosis*, *C. krusie*, *parapsilosis* & *tropicalis* together, *C. krusie* & *tropicalis*

together (3, 1, 1, 1) representing (6, 2, 2, 2 %)
 %) Table (4).

Table 4: Frequency of *C. spp.* For orthodontic individuals according to Salivary pH groups

≤7			>7		
Spp.	Freq.	%	Spp.	Freq.	%
Non	17	34	Non	25	50
<i>C. albicans</i>	1	2	<i>C. parpsilosis</i>	3	6
<i>C. parpsilosis</i>	4	8	<i>C. krusi</i>	1	2
<i>C. krusi</i>	1	2	<i>C. tropicalis</i>		
<i>C. tropicalis</i>	19	38		19	38
<i>C. parpsilosis</i> & <i>C. krusi</i>	1	2	<i>C. parpsilosis</i> & <i>C. tropicalis</i>	1	2
<i>C. parpsilosis</i> & <i>C. propicalis</i>	1	2	<i>C. krusi</i> & <i>C. tropicalis</i>	1	2
<i>C. krusi</i> & <i>C. tropicalis</i>	3	6			

Spp.: species, Ferq: frequency, %:percentage

For gender male:19 samples representing 37.3 % were free of *Candida* spp. While *C. tropicalis* appeared in 22 samples representing 43.1%, *C. parapsilosis*, *C. Parpsilosis* & *C. tropicalis* together, *C. krusie* and *tropicalis* together were (3, 2, 5) representing (5.9%, 3.9 %, 9.8%) respectively, for female group *Candida* spp.

Absent in 24 sample representing 49 % while again *C. tropicalis* were the most frequently appeared in 15 samples representing 30.6 %, other *Candida* spp. *C. albicans*, *C. parapsilosis*, *C. krusie* , *C. parapsilosis* and *C. tropicalis* together (1, 4, 1, 4) representing (2,% 8.2%, 2%, 8.2 %) Table (5).

Table 5: Frequency of *C. spp.* For orthodontic individuals according to gender groups

Male			Female		
Spp.	Freq.	%	Spp.	Freq.	%
Non	19	37.3	None	24	49
<i>C. Parpsilosis</i>	3	5.9	<i>C. albicans</i>	1	2
<i>C. tropicalis</i>	22	43.1	<i>C. Parpsilosis</i>	4	8.2
<i>C. parpsilosis</i> & <i>C. tropicalis</i>	2	3.9	<i>C. krusi</i>	1	2
<i>C. krusi</i> & <i>C. tropicalis</i>	5	9.8	<i>C. tropicalis</i>	15	30.6

			<i>C.parasilosis&C.tropicalis</i>	4	8.2
--	--	--	---------------------------------------	---	-----

Spp.: species, Ferq: frequency, %:percentage

Discussion:

The oral cavity hosts various microorganisms, including bacteria, viruses, and fungi (Deo and Deshmukh, 2019; Radaic and Kapila, 2021). Some fungi are part of natural microflora and typically do not harm the host, suggesting a mutualistic relationship. However, some biologists view isolated fungal colonies as a form of parasitism, indicating potential harm (Hall and Noverr, 2017). The presence of orthodontics fixed device can increase plaque accumulation, affecting the balance of bacteria and fungi in the mouth (Khanpayeh, Jafari and Tabatabaei, 2014).

The research compared salivary Candida colonization between patients with fixed devices on permanent teeth (test group) and subjects without orthodontic appliances (control group). Samples were divided into test and control groups based on age, with two categories: subjects aged 20 or younger (40 test, 10 control) and those older than 20 (40 test, 10 control). The groups were also categorized by gender, with 40 test and 11 control males, and, 40 test and, 9 control females. Additionally, samples were

classified according to pH with 39 test, 11 control ≤ 7 & 41 test, 9 control >7 . Exclusion criteria were smokers, patients taking medications like immuno suppressant and antibiotics and those who had received additional orthodontic remedy also were omitted as any of these considerations were shown to induce changes in oral clonal expansion by Candida (Hernandez-Solis et al., 2016).

Different methods have been fortunately utilized for the separation and identification of Candida in oral, which include swab culture (Tapia et al., 2019) and saliva culture (Arab et al., 2019).

There was no statistical difference in the prevalence of all types of Candida spp. Between the test (for patients wearing fixed orthodontic appliance) and control groups in both age groups ($\leq 20, >20$) $p=(0.23, 0.09)$ respectively, gender male & female groups $p=(0.79, 0.1)$ respectively, pH groups (≤ 7 and >7) $p=(0.35, 0.06)$ respectively, according to our own perceptions, there was increase in the colonies number of Candida in the test group in comprising with control but this increasing was not significant and this outcome agree

with Addy et al. showed no significant differences between sets of healthy adolescents without fixed brackets and remedy with fixed brackets. The researchers of the study proposed fixed orthodontic device may motivate candida reproduction in those who are candida bearer (Brzezińska-Zajac et al., 2023), likewise Dar-Odeh et al. (Dar-Odeh et al., 2011) in a study manifested that fixed metallic orthodontic device did not promote oral Candida colonization through the first four months research time, other researchers Hagg et al. also founded an increase Candida colonization with fixed orthodontic device (Hägg et al., 2004).

Candida species in patients wearing fixed orthodontic devices compared to those not wearing orthodontic appliances. Our results revealed that both groups showed an increased susceptibility to colonization *C.albicans* Candida tropicalis, rather than *Candida Tropicalis*. This finding contradicts what Hägg et al. reported, the predominant candida species isolated post wearing fixed orthodontic devices *C. albicans* (Hägg et al., 2004), and also Hibino et al. wrought that *C. albicans* is an opportunistic microbe typically found the patients with orthodontic devices (Hibino et al., 2009).

Conclusion:

Remedy with fixed orthodontic devices may alter the oral cavity's microbiota by creating new retentive areas, which can have a transitory impact on the count and prevalence of Candida species. However, our study found no significant variation between the test groups. This indicates that Candida is a part of the endogenous microflora and are considered commensal microorganism and it is portion of oral microflora. Additionally, the good oral hygiene practices of orthodontic patients by multiple brushing and mouthwash use, also influence the prevalence and count of Candida.

Supplementary Material

None.

Funding

This research received no external funding.

Data Availability Statement

Data are available from the authors upon reasonable request.

Conflict of interest

The authors reported that they have no conflicts of interest.

Acknowledgments

The authors would like to thank Mustansiriyah University

(www.uomustansiriyah.edu.iq), Baghdad, Iraq, for their support in the present work.

References

1. Arab, S., Malekshah, S.N., Mehrizi, E.A., Khanghah, A.E., Naseh, R. and Imani, M.M. (2016) 'Effect of fixed orthodontic treatment on salivary flow, pH and microbial count', *Journal of Dentistry (Tehran, Iran)*, 13(1), p. 18.
2. Baricevic, M., Mravak-Stipetic, M., Majstorovic, M., Baranovic, M., Baricevic, D. and Loncar, B. (2011) 'Oral mucosal lesions during orthodontic treatment', *International Journal of Paediatric Dentistry*, 21(2), pp. 96–102. Available at: <https://doi.org/10.1111/j.1365-263X.2010.01078.x>.
3. Brzezińska-Zajac, A., Sycińska-Dziarnowska, M., Spagnuolo, G., Szyszka-Sommerfeld, L. and Woźniak, K. (2023) 'Candida species in children undergoing orthodontic treatment with removable appliances: a pilot study', *International Journal of Environmental Research and Public Health*, 20(6), p. 4824. Available at: <https://doi.org/10.3390/ijerph20064824>.
4. Castellanos-Cosano, L., Machuca-Portillo, G., Mendoza-Mendoza, A., Iglesias-Linares, A., Soto-Pineda, L. and Solano-Reina, E. (2013) 'Integrated periodontal, orthodontic, and prosthodontic treatment in a case of severe generalized aggressive periodontitis', *Quintessence International*, 44(7), pp. 513–521.
5. Chan-Woo Song, Hye-Kyoung Kim and Mee-Eun Kim (2015) 'Clinical usefulness of pH papers in the measurement of salivary pH', *Journal of Oral Medicine and Pain*, 40(3), pp. 124–129. Available at: <https://doi.org/10.14476/jomp.2015.40.3.124>.
6. Dar-Odeh, N., Shehabi, A., Al-Bitar, Z., Al-Omari, I., Badran, S., Al-Omiri, M., Naser, M., Al-Beyari, M. and Abu-Hammad, O. (2011) 'Oral Candida colonization in patients with fixed orthodontic appliances: the importance of some nutritional and salivary factors', *African Journal of Microbiology Research*, 5(15), pp. 2150–2154. Available at: <https://doi.org/10.5897/AJMR11.382>.
7. Deo, P.N. and Deshmukh, R. (2019) 'Oral microbiome: unveiling the fundamentals', *Journal of Oral and Maxillofacial Pathology*, 23(1), pp. 122–128. Available at: https://doi.org/10.4103/jomfp.JOMFP_304_18.
8. Faraj, M.M., AL-Jobori, K.M. and Risin, M.H. (2020) 'Evaluation of Vitik2 System for clinical identification of Candida species and their antifungal exposure test', *Iraqi Journal of Biotechnology*, 19(1), pp. 28–39.
9. Hägg, U., Kaveewatcharanont, P., Samaranayake, Y.H. and Samaranayake, L.P. (2004) 'The effect of fixed orthodontic appliances on the oral carriage of Candida species and

- Enterobacteriaceae', *The European Journal of Orthodontics*, 26(6), pp. 623–629. Available at: <https://doi.org/10.1093/ejo/26.6.623>.
10. Hall, R.A. and Noverr, M.C. (2017) 'Fungal interactions with the human host: exploring the spectrum of symbiosis', *Current Opinion in Microbiology*, 40, pp. 58–64. Available at: <https://doi.org/10.1016/j.mib.2017.10.020>.
11. Hernandez-Solis, S.E., Rueda-Gordillo, F., Flota-Alcocer, A.D., Agullar-Ayala, F.J. and Lama-González, E.M. (2016) 'Influence of orthodontic appliances on the occurrence of *Candida* spp. in the oral cavity', *Revista Chilena de Infectologia*, 33(3), pp. 293–297. Available at: <https://doi.org/10.4067/S0716-10182016000300007>.
12. Hibino, K., Wong, R.W., Hägg, U. and Samaranayake, L.P. (2009) 'The effects of orthodontic appliances on *Candida* in the human mouth', *International Journal of Paediatric Dentistry*, 19(5), pp. 301–308. Available at: <https://doi.org/10.1111/j.1365-263X.2009.00988.x>.
13. Khanpayeh, E., Jafari, A.A. and Tabatabaei, Z. (2014) 'Comparison of salivary *Candida* profile in patients with fixed and removable orthodontic appliances therapy', *Iranian Journal of Microbiology*, 6(4), p. 263.
14. Klaus, K., Eichenauer, J., Sprenger, R. and Ruf, S. (2016) 'Oral microbiota carriage in patients with multibracket appliance in relation to the quality of oral hygiene', *Head & Face Medicine*, 12, p. 25. Available at: <https://doi.org/10.1186/s13005-016-0125-x>.
15. Lucchese, A., Bondemark, L., Marcolina, M. and Manuelli, M. (2018) 'Changes in oral microbiota due to orthodontic appliances: a systematic review', *Journal of Oral Microbiology*, 10(1), p. 1476645. Available at: <https://doi.org/10.1080/20002297.2018.1476645>.
16. Magno, A.F., Enoki, C., Ito, I.Y., Matsumoto, M.A., Faria, G. and Nelson-Filho, P. (2008) 'In-vivo evaluation of the contamination of Super Slick elastomeric rings by *Streptococcus mutans* in orthodontic patients', *American Journal of Orthodontics and Dentofacial Orthopedics*, 133(4), pp. S104–S109. Available at: <https://doi.org/10.1016/j.ajodo.2006.04.054>.
17. Radaic, A. and Kapila, Y.L. (2021) 'The oralome and its dysbiosis: new insights into oral microbiome-host interactions', *Computational and Structural Biotechnology Journal*, 19, pp. 1335–1360. Available at: <https://doi.org/10.1016/j.csbj.2021.02.010>.
18. Sampaio, A.A., Souza, S.E., Ricomini-Filho, A.P., Del Bel Cury, A.A., Cavalcanti, Y.W. and Cury, J.A. (2019) '*Candida albicans* increases dentine demineralization provoked by *Streptococcus mutans* biofilm', *Caries*

- Research*, 53(3), pp. 322–331. Available at: <https://doi.org/10.1159/000494033>.
19. Tapia, C.V., Batarce, C., Amaro, J., Hermosilla, G., Rodas, P.I. and Magne, F. (2019) 'Microbiological characterisation of the colonisation by *Candida* sp in patients with orthodontic fixed appliances and evaluation of host responses in saliva', *Mycoses*, 62(3), pp. 247–251. Available at: <https://doi.org/10.1111/myc.12880>.
20. Van Wyk, C. and Steenkamp, V. (2011) 'Host factors affecting oral candidiasis', *Southern African Journal of Epidemiology and Infection*, 26(1), pp. 18–21. Available at: <https://doi.org/10.1080/10158782.2011.11441414>.