



## Histological Evaluation of Pure Titanium Dental Implants Coated with a Mixture of Nano Titanium Oxide and Nano Hydroxyapatite

Muna Nasir<sup>1</sup>, Hanan A. Khalaf <sup>2</sup>, and Athraa Y Al-hijazi<sup>3</sup>

<sup>1</sup> Department of Prosthodontic, Ahl al bayt University, Iraq

<sup>2</sup> Department of Prosthodontic, Uruk University, Baghdad, Iraq

<sup>3</sup> Oral histology and biology, University of al-mustaqbal Babylon-Iraq

Correspondence: Hind S. Kamil

Email: [dalia\\_abbas@uomustansiriyah.edu.iq](mailto:dalia_abbas@uomustansiriyah.edu.iq)

Received: 31 August 2024; Accepted: 25 June 2025; Published: 30 June 2025

### Abstract

**Aim of the study:** Dental implant surface characteristics affect the success of implant treatment. Many studies have focused on coating titanium (Ti) implant surfaces with bioactive materials. Bio-active surfaces play a crucial role in enhancing the healing process of the human bone tissue surrounding dental implants. This study aims to evaluate the histological response and bonding strength of titanium screws coated with a combination of nano-sized titanium oxide (TiO<sub>2</sub>) and nano-hydroxyapatite (HA) after healing intervals of two and six weeks.

**Material and method:** A suspension was prepared using 5.27 g of nano-hydroxyapatite and 2.68 g of nano-titanium oxide. Commercially pure Grade II titanium screws, measuring 3.0 mm in diameter and 8 mm in length, were coated using the dip-coating technique. The presence of the nano-coating on the titanium surfaces was confirmed through X-ray diffraction (XRD) and microscopic analysis. For histological evaluation, some screws were coated with the nano TiO<sub>2</sub>-HA mixture, while others were coated solely with nano-HA, and both types were implanted into the tibiae of New Zealand rabbits. Peri-implant bone formation was analyzed at two and six weeks post-implantation using a light microscope equipped with a GT-N7100 camera.

**Results:** Optical microscopy revealed a uniform, crack-free coating layer on the titanium screw surfaces. XRD patterns confirmed the presence of both hydroxyapatite and titanium dioxide phases. Histological analysis showed enhanced new bone formation in the group with the TiO<sub>2</sub>-HA mixture coating, evidenced by early osteoblast proliferation and more advanced bone maturation at both two and six weeks post-surgery, when compared to implants coated only with nano-hydroxyapatite.

**Conclusion:** The implant coating mixture of nano TiO<sub>2</sub> & nano HA promotes new bone formation more rapidly than a coating of nano hydroxyapatite alone.

**Keywords:** Nano TiO<sub>2</sub>, nano HA, dental implant coating, histological assessment.

### Introduction

Dental implant is a prosthetic device made from alloplastic material (s) that is surgically inserted into the oral tissues beneath the mucosa and/or periosteum, or directly into the bone, to support and retain fixed or removable dental prostheses (The Golssary, 2005).

The fundamental process behind the effectiveness of dental implants is osseointegration, a biological process in which materials such as titanium establish a direct and stable interface with the surrounding bone. After the implant fixture is inserted into the bone, osseointegration begins. Once sufficient integration has occurred, a dental prosthesis such as a crown, bridge, or denture is affixed to the implant. It is essential to allow adequate healing time to



ensure proper osseointegration before attaching the final restoration (Misch, 2005; Zhao, Fan and Zhang, 2011; Casaletto et al., 2001).

Titanium (Ti) is widely used for implants because of its excellent mechanical and chemical properties. Its high biocompatibility is largely due to its resistance to corrosion, which arises from the formation of a stable oxide layer on its surface. This oxide layer notably changes the surface topography of titanium, particularly regarding pore orientation (Joon et al., 2002; Lautenschlager and Monaghan, 1993).

A widely studied biological apatite is hydroxyapatite (HA), also referred to as calcium hydroxyapatite or simply apatite. HA is an inorganic bioactive ceramic that closely resembles the chemical composition of natural bone. It is considered a bioactive material because it can form strong chemical bonds with adjacent bone tissue (Samar, Abhilasha and Himesh, 2007). Various techniques have been explored to apply HA and other calcium phosphate-based coatings to metal implants. These include plasma spraying, sol-gel processing, electron beam deposition, and ion beam sputtering. While these methods show promise, they can present difficulties when used on implants with intricate geometries (Salman, 2011; Nie, 2000; Liu, Chu and Ding, 2004; Ghiban et al., 2006).

The dip coating technique is another method used for applying coatings. It involves immersing the object in a solution and then withdrawing it under carefully controlled temperature and atmospheric conditions. This

technique is favored for its simplicity and adaptability to various implant shapes (Aksakal B and, Hanyaloglu, 2008).

This study was performed to evaluate the bone-implant interface of pure titanium oxide implants after dipping in a mixture of nano TiO<sub>2</sub> and nano HA .

### **Materials and methods:**

This study was approved by the Research Ethics Committee of the college of dentistry, Uruk University (Approval No. 232004).

**Sample preparation for an in vitro experiments:** Commercially pure Titanium (grade 2) (OrotigSrl Eu , Italy) was used as the substrate for coating and characterization test. The titanium rod was cut into small circular discs (29mm diameter and 2 mm thickness) by lathe machine (Zaozhuang, Shandong, China) .

**Implant preparation:** Eight screw-type implants were manufactured from commercially pure titanium (Cp Ti) rods (Orotig Srl Eu, Italy) using a lathe machine. Each implant measured 3.0 mm in diameter and 8 mm in length, consisting of a 5 mm threaded portion and a 3 mm smooth section. The implants, designed with a thread pitch of 1 mm, were intended for histological evaluation.

**Preparation of coating solution:** To create the nano-hydroxyapatite (nHA) coating solution, 0.01 g of phosphorus pentoxide (P<sub>2</sub>O<sub>5</sub>, 99.9% purity) was dissolved in 50 ml of absolute ethanol (99.8%). This mixture was stirred continuously and heated at 45°C on a hot plate for 30 minutes. After that, 7 g

of nano-hydroxyapatite powder (SkySpring Nanomaterials, USA), was gradually added, maintaining the same temperature, and stirred for an additional 30 minutes. For the combined nano-hydroxyapatite and nano-titanium oxide coating solution, 5.27 g of nHA and 2.68 g of nano-TiO<sub>2</sub> powders were blended using the same protocol. All powders were measured precisely using a digital analytical balance with 0.001 g sensitivity (Scaltec, Germany).

**Discs and screws coating:** Titanium discs and screw implants were coated by

immersing them in the nanoparticle suspension for 5 seconds, followed by a one-minute withdrawal phase. This dipping cycle was repeated three times to achieve consistent and even coating layers.

**Heat treatment:** To enhance the coating's density and adhesion, the coated specimens were sintered in a tube furnace (Carbolated furnace, BAMFORD, England; Serial No. 3/88/432). Sintering was conducted in an argon atmosphere to prevent oxidation, with optimal results achieved at a processing temperature of 400°C (see Figures 1 and 2).



**Figure 1:** CP Ti discs (a) Uncoated, (b) nano HA coating, (c) mixture of nano HA &TiO<sub>2</sub>nano HA coating



**Figure 2:** “CP Ti screws coated with mixture of nano HA &TiO<sub>2</sub>

**Sterilization of screws:** The screws were sterilized with gamma irradiation at 2.5-3.0 mega rad using gamma cells 220 with CO 60 source (Vishal India).

**Tests performed**

**A. Microscopical examination:** The appearance of each sample for each type of coating (two samples) was examined by using

optical microscope at different magnification powers (50 x , 100 x), (Nikon Eclipse ME 600L/441002, Japan)”. Supplied with digital camera type DXM 1200 F. Nikon ACT version 2.62 , 2000 soft ware.

**B. “X-Ray phase analysis:** Phase analysis was applied on CP Ti discs before and after coating with selected materials using (Shimadzu LabX- XRD- 6000) (SHIMADZU, XRD-6000, Japan). The peak indexing was done depending on the JCPDS (joint committee on powder diffraction standards).

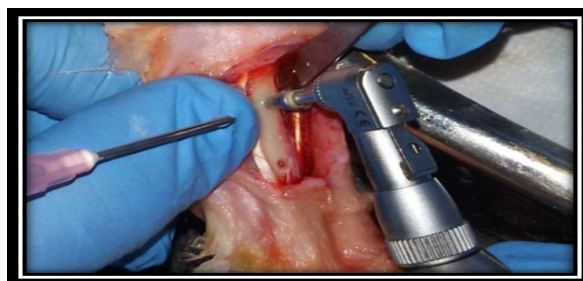
**Sample grouping:**

**A. Control group (4 screws):** This group consists of 2 screws for each healing interval

(2 weeks and 6 weeks), coated with Nano HA.

**B. Experimental group (4screws):** This group includes 2 screws for each healing interval (2 weeks and 6 weeks), coated with mixture of nano HA and nano titanium oxide .

**Surgical procedure:** Four implants (2 nano HA coated and 2 mixed nano HA and nano TiO<sub>2</sub> coated) were implanted in the tibia of New Zealand rabbits. Each tibia received one implant coated with nano HA and the other one coated with mix. of nano HA and nano TiO<sub>2</sub>) consequently starting from the proximal to the distal side for each experimental tibia (see Figures 3 and 4).



**Figure 3:** Hole preparation within tibia of New Zealand rabbits for screw implantation



**Figure 4:** Screw insertion (distance 1cm between 2 screws)

## Histological testing

**Methods.** Bone sectioning was done while the animal was anesthetized with (Ketamine 50 mg; HOLLAND, DIAZEPAM 10 mg Iraq, Xylazine 20, Holland). A disc cutter with low rotating speed and vigorous cooling was utilized for sectioning the bone around the

implant. Cutting was applied 5mm away from the head of the implant to make bone-implant block for histological assessment. Bone-implant blocks were immediately placed in 10% freshly prepared formalin (Achema, Urope) and allowed to stand overnight for fixation (Figure 5).



**Figure 5:** Bone-implant block stored in 10% formalin for fixation

Following fixation, bone decalcification was performed by dipping the specimens in 10% solution nitric acid (Achema, Urope) (2 to 3 days), the implant was gently eliminated from its bone bed (Bhaskar, 1991) the bone-implant block was sectioned horizontally into two parts using a sharp scalpel (Linder, 1985). Dehydration of the specimen was applied by dipping it in alcohol with serial concentration (70%, 80%, 90% and absolute alcohol remaining in each dish for one hour). Specimens were passed through two changes of xylene for 15-20 min. Each specimen was placed in a dish of melted paraffin and the dish was kept into a constant-temperature oven regulated to 60°C for 30 minutes. The

specimens were molded in the center of paraffin block, and adjusted to microtome where serial sectioning with (4-5)  $\mu\text{m}$  of thickness for each section was performed and placed on a slide. Total of 30 sections were made for each coating material in each period of time, the slide was placed in a container having haematoxylin and eosin stain for 10 minutes to stain the tissue". Photomicrographs were captured at 40x magnification using a light microscope equipped with a SAMSUNG GT-N7100 camera.

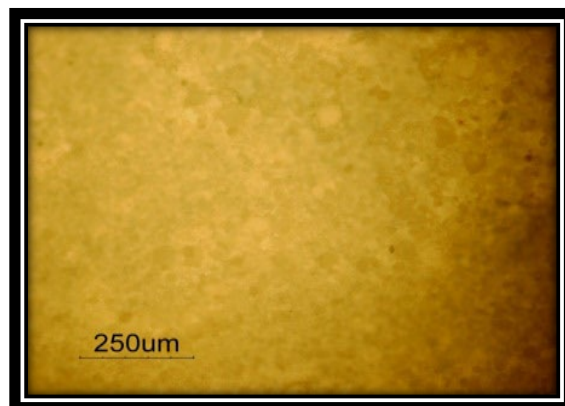
## Results

**Optical microscopical findings.** The images revealed a uniform and continuous coating layer of nano-hydroxyapatite (HA) and a composite of nano-HA with nano-TiO<sub>2</sub> on the

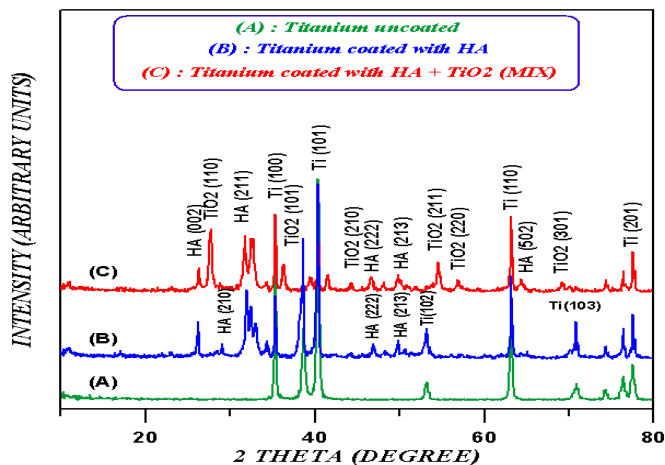
surface of the titanium discs. Notably, the coating appeared intact and free of cracks (Figures 6 and 7).



**Figure 6:** Optical micrographic Nano HA coated disc surface with no cracks in the coating layer



**Figure 7:** Microphotograph showing bone tissue around a nano-hydroxyapatite (HA) coated implant after 2 weeks, stained with H&E, magnification x20.



**Figure 8:** X-ray diffraction patterns were recorded for (A) the uncoated sample, (B) the specimen coated with nano-hydroxyapatite (HA), and (C) the sample coated with a mixture of nano-HA and nano-TiO<sub>2</sub> on commercially pure titanium discs.

**X-ray Diffraction of nano coated disc:** As shown in Figure (8), the dip-coated surface is uniformly covered with hydroxyapatite (HA) and a combination of HA and TiO<sub>2</sub>. This is confirmed by the XRD pattern, where most diffraction peaks correspond to the crystalline phases of HA and TiO<sub>2</sub>, in accordance with the standard JCPDS files: #9-432 for HA, #44-1294 for titanium, and #21-1276 for TiO<sub>2</sub>.

**Histological test:**

**1) Two weeks after implantation**

**A-**

A histological examination of the nano-HA coated implants revealed visible implant threads (indicated by arrows), along with newly formed delicate collagen fibers and osteoid tissue (OST) developing within the bone marrow spaces, as shown in Figure (9). In contrast, the bone tissue surrounding Cp Ti implants coated with a nano-HA and nano-TiO<sub>2</sub> mixture demonstrated the presence of bone trabeculae (arrow) occupying the thread apex, with observable bone marrow (BM) components, as illustrated in Figure (10). Additionally, osteoclasts (arrow) were noted occupying Howship’s lacunae at the base of the implant site, adjacent to regions of woven bone (WB), as seen in Figure (11).

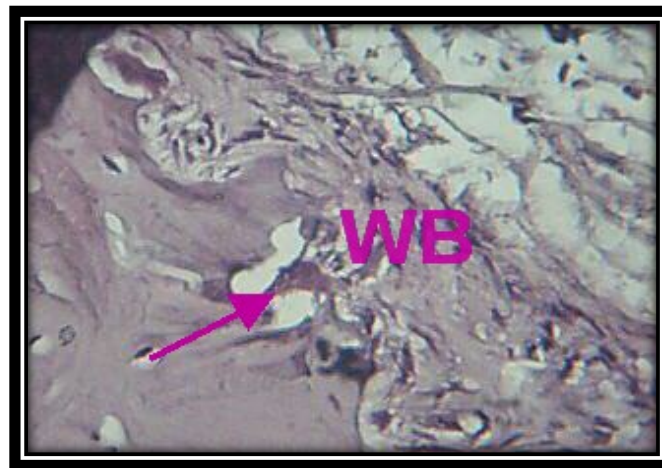


**Figure 9:** Microphotograph showing bone tissue around a nano-hydroxyapatite (HA) coated implant after 2 weeks, stained with H&E, magnification x20.

**B-**



**Figure 10:** Bone trabeculae (arrow) occupies apex of the thread, bone marrow (BM), H&E×40



**Figure 11:** Shows an osteoclast (indicated by an arrow) residing within a Howship's lacuna at the base of the implant bed, in close proximity to woven bone (WB), as observed under H&E staining at 20x magnification.

## **2) Six weeks after implantation**

the histological analysis of implants coated with nano-hydroxyapatite (nano HA) reveals visible implant threads (arrows), along with the formation of woven bone (WB) and bone trabeculae (BT), as illustrated in Figure (12). Another microscopic image, Figure (13), demonstrates trabecular bone (BT), osteocytes (arrows), and osteoblasts

(arrowheads) present along the bone surface. In Figure (14), the section of commercially pure titanium (Cp Ti) implants coated with a combination of nano-hydroxyapatite (HA) and nano-titanium dioxide (TiO<sub>2</sub>) reveals new bone (NB) formation merging with the existing basal bone (BB) after six weeks of healing, Figure (15) displays mature trabecular bone, with osteoblasts (arrows)

lining the bone surface and osteocytes (arrowheads) embedded within the bone matrix.



**Figure 12:** Displays woven bone (WB) deposition and trabecular bone (BT) formation, along with visible implant thread impressions (arrows), stained with H&E, magnification  $\times 40$ .

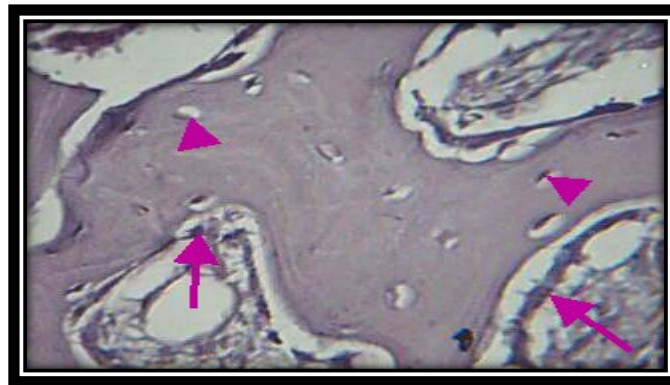


**Figure 13:** Bone trabeculae (BT) coalesce with basal bone (BB). H&E  $\times 10$



B-

**Figure 14:** Microscopic examination reveals newly formed bone (NB) merging seamlessly with the underlying basal bone (BB). Stained with H&E, magnification  $\times 20$ .



**Figure 15:** Mature trabecular bone is evident, with osteoblasts (arrows) lining the bone surface and osteocytes (arrowheads) embedded within the bone matrix. H&E stain, magnification  $\times 40$ .

## Discussion

Improving the integration of metallic implants with surrounding bone tissue can be achieved through the application of a thin biocompatible ceramic coating. One effective method for achieving a uniform and pure coating on the implant surface is dip-coating (Nie, 2000; Jamil, 2011; Waheed, 2013; Jani, 2014).

Optical microscopy of coated implants prior to insertion showed no signs of cracking in the ceramic layers produced using the dip-coating technique for both types of coatings.

This absence of cracks may be attributed to the controlled deposition process, low-temperature sintering, and precise adjustment of the  $P_2O$  content (0.01 g in 50 ml ethanol). This observation contrasts with the findings of (Jamil, 2011), who reported visible cracks in the coating under optical microscopy.

X-ray diffraction (XRD) analysis confirmed that the surface of the coated implants was thoroughly covered with a nanolayer consisting of hydroxyapatite (HA) and a HA– $TiO_2$  mixture, as evidenced by the characteristic diffraction peaks corresponding to both HA and  $TiO_2$ . These

results are consistent with previous studies demonstrating that X-rays can penetrate through thin ceramic layers to identify their structural composition (Kweh, 1999).

Histological examination of implants coated with nano HA after two weeks of insertion in tibial bone revealed early formation of an osteoid (woven bone) layer near the implant surface, along with isolated bone islands within the marrow. These observations support previous findings (Hammad, 2007; Mano, 2002; Yonus, 2000), which described early stages of new bone development, even when different implant designs, materials, and techniques were used.

Similarly, implants coated with a nano mixture of HA and TiO<sub>2</sub> exhibited extensive trabecular bone development with abundant neovascularization after two weeks. Osteoblasts were seen lining the trabeculae, indicating active bone formation. These findings suggest that HA-TiO<sub>2</sub>-coated implants promote robust early-stage osseointegration, making them suitable candidates for immediate implant loading. This outcome aligns with reports from (Salman, 2011; Al-Ma'adhidi, 2002), which documented increased bone growth around bioceramic-coated titanium implants within a two-week period.

After six weeks of implant placement, implants coated with nano-hydroxyapatite (HA) and titanium dioxide (TiO<sub>2</sub>) showed new bone integrating with the basal bone, along with the presence of mature, trabeculated bone. Osteoblasts were observed lining the implant surface, and osteocytes were embedded within the bone matrix.

These findings are consistent with previous studies (Waheed, 2013; Jani, 2014; Hammad, 2007), Similar patterns of bone formation were observed within the threaded areas of implants coated with nano-hydroxyapatite (nanoHA) and titanium dioxide (TiO<sub>2</sub>), even after comparable healing periods.

The findings clearly demonstrate that bone tissue developed around all coated implants, with no evidence of inflammation or fibrous tissue encapsulation, regardless of the coating composition or healing time. This supports the idea that the healing outcome is strongly influenced by the implant's surface characteristics. These findings align with previous research (Waheed, 2013; Jani, 2014), which concluded that bioactive coatings enhance bone regeneration.

### **Conclusion:**

The results showed early bone formation, mineralization and maturation around Ti screws coated with mixture of nano HA & nano TiO<sub>2</sub> in comparison to Ti screws coated with nano HA.

### **Supplementary Material**

None.

### **Funding**

This research received no external funding.

### **Data Availability Statement**

Data are available from the authors upon reasonable request.

### **Conflict of interest**

The authors reported that they have no conflicts of interest.

### Acknowledgments

Hind S. Kamil and Dalia K. Abbas would like to thank Mustansiriyah University ([www.uomustansiriyah.edu.iq](http://www.uomustansiriyah.edu.iq)), Baghdad, Iraq, for their support in the present work.

### References

1. Aksakal, B. and Hanyaloglu, C. (2008) 'Bioceramic dip-coating on Ti-6Al-4V and 316L -SS implant materials', *Journal of Materials Science: Materials in Medicine*, 19(5), pp. 2097–2104. Available at: <https://doi.org/10.1007/s10856-007-3304-2>.
2. Al-Ma'adhidi, T.M.H. (2002) *The significance of surface characteristics on Iraqi dental implants*. PhD thesis. College of Dentistry, University of Baghdad.
3. Al-Mudarris, B.A. (2006) *The significance of biomimetic calcium phosphate coating on commercially pure titanium and Ti-6Al-7Nb alloy*. PhD thesis. College of Dentistry, University of Baghdad.
4. Bhaskar, S.N. (1991) *Orban's oral histology and embryology*. 11th edn. St. Louis: Mosby.
5. Casaletto, M.P., Ingo, G.M., Kaciulis, S., Mattogno, G., Pandolfi, L. and Scavia, G. (2001) 'Surface studies of in vitro biocompatibility of titanium oxide coatings', *Applied Surface Science*, 172(3–4), pp. 167–177. Available at: [https://doi.org/10.1016/S0169-4332\(00\)00844-8](https://doi.org/10.1016/S0169-4332(00)00844-8).
6. Ghiban, B., Jicmon, G. and Cosmeleata, G. (2006) 'Structural investigation of electrodeposited hydroxyapatite on titanium supports', *Romanian Journal of Physics*, 51, pp. 173–180.
7. The Glossary of Prosthodontic Terms (2005) *Journal of Prosthetic Dentistry*, 94(1), pp. 58–78.
8. Hammad, T.I. (2007) *Histological and mechanical evaluation of electrophoretic bioceramic deposition on Ti- 6Al- 7Nb dental implants*. PhD thesis. College of Dentistry, University of Baghdad.
9. Han, Y., Hong, S.H. and Xu, K. (2002) 'Synthesis of nanocrystalline titania films by micro-arc oxidation', *Materials Letters*, 56(5), pp. 744–747. Available at: [https://doi.org/10.1016/S0167-577X\(02\)00606-7](https://doi.org/10.1016/S0167-577X(02)00606-7).
10. Ivankovic, H. (2005) 'Abrasion resistant thin partially stabilised zirconia coatings by sol-gel dip-coating', *Chemical and Biochemical Engineering Quarterly*, 19(1), pp. 31–37.
11. Jamil, B.A. (2011) *Role of biomaterial collagen coated titanium implant surface on expression of bone protein markers and osseointegration reaction, in comparison to titanium implant coated with zirconia (Immunohistochemical & Histomorphometric Studies In Rabbits)*. PhD thesis. College of Dentistry, University of Baghdad.

12. Jani, G.H. (2014) *Torque removal test of strontium chloride and hydroxyapatite coated commercially pure titanium implant complemented with histomorphometric analysis (a comparative study)*. Master's thesis. College of Dentistry, University of Baghdad.
13. Lautenschlager, E.P. and Monaghan, P. (1993) 'Titanium and titanium alloys as dental materials', *International Dental Journal*, 43(3), pp. 245–253.
14. Li, P. (2003) 'Biomimetic nano-apatite coating capable of promoting bone ingrowth', *Journal of Biomedical Materials Research Part A*, 66(1), pp. 79–85. Available at: <https://doi.org/10.1002/jbm.a.10519>.
15. Linder, L. (1985) 'High-resolution microscopy of the implant tissue interface', *Acta Orthopaedica Scandinavica*, 56(3), pp. 269–272. Available at: <https://doi.org/10.3109/17453678508993011>.
16. Liu, X., Chu, P.K. and Ding, C. (2004) 'Surface modification of titanium, titanium alloys, and related materials for biomedical applications', *Materials Science and Engineering: R: Reports*, 47(3–4), pp. 49–121. Available at: <https://doi.org/10.1016/j.mser.2004.11.001>.
17. Mano, T., Ueyama, Y., Ishikawa, K., Matsumura, T. and Suzuki, K. (2002) 'Initial tissue response to a titanium implant coated with apatite at room temperature using a blast coating method', *Biomaterials*, 23(9), pp. 1931–1936. Available at: [https://doi.org/10.1016/S0142-9612\(01\)00319-2](https://doi.org/10.1016/S0142-9612(01)00319-2).
18. Misch, C.E. (2005) *Dental implant prosthetics*. St. Louis: Elsevier-Mosby.
19. Nie, X., Leyland, A. and Matthews, A. (2000) 'Deposition of layered bioceramic hydroxyapatite/TiO<sub>2</sub> coatings on titanium alloys using a hybrid technique of micro-arc oxidation and electrophoresis', *Surface and Coatings Technology*, 125(1–3), pp. 407–414. Available at: [https://doi.org/10.1016/S0257-8972\(99\)00612-X](https://doi.org/10.1016/S0257-8972(99)00612-X).
20. Park, J.B. and Bronzino, J.D. (2002) *Biomaterials: principles and applications*. Boca Raton: CRC Press.
21. Salman, Y.M. (2011) *A study of electrophoretic deposition of alumina and hydroxyapatite on tapered Ti-6Al-7Nb dental implants: mechanical and histological evaluation*. PhD thesis. College of Dentistry, University of Baghdad.
22. Samar, J., Abhilasha, B. and Himesh, A. (2007) 'Nanocrystalline calcium phosphate ceramics in biomedical engineering', *Materials Science and Engineering: C*, 27(3), pp. 441–449. Available at: <https://doi.org/10.1016/j.msec.2006.05.018>.
23. Shapiro, F. (2008) 'Bone development and its relation to fracture repair: the role of mesenchymal osteoblasts and surface

- osteoblasts', *European Cells & Materials*, 15, pp. 53–76. Available at: <https://doi.org/10.22203/eCM.v015a05>.
24. Waheed, A.S. (2013) *Mechanical and histological evaluation of nano zirconium oxide coating on titanium alloy (Ti-6Al-7Nb) dental implants*. Master's thesis. College of Dentistry, University of Baghdad.
25. Kweh, S.W.K., Khor, K.A. and Cheang, P. (1999) 'The production and characterisation of hydroxyapatite (HA) powder', *Journal of Materials Processing Technology*, 89–90, pp. 373–377. Available at: [https://doi.org/10.1016/S0924-0136\(99\)00061-8](https://doi.org/10.1016/S0924-0136(99)00061-8).
26. Yonus, N.A. (2000) *Iraqi dental implants interface mechanical and histological observation (an experimental study on rabbits)*. PhD thesis. College of Dentistry, University of Baghdad.
27. Zhao, H.S., Fan, H. and Zhang, X.D. (2011) 'Advances in biomimetic apatite coating on metal implants', in George, A. (ed.) *Advances in biomimetics*. Rijeka, Croatia: InTech, pp. 397–416. Available at: <https://doi.org/10.5772/14938>.